

Next  
Week!

## 2022 Dates To Remember

- **May 26, 2022 Market Beef Tagging and Weigh in for Rate of Gain 4:00-6:00pm Bolado Park Scale.**
- July 1 – July 12, 2022 Tags for Goats, Lambs and Hogs are ordered by each leader, one order per club/chapter, in an email to: [entry@sanbenitocountyfair.com](mailto:entry@sanbenitocountyfair.com)
- July 13, 2022 Pre packaged Tags for Goats, Lambs and Hogs are picked up by leaders, one per club.  
4:00-6:00pm at Fair Office
- July 13<sup>th</sup> - 29<sup>th</sup> Leaders Tag animals, photograph tagged animals and return tagging sheets and photos to office in **ONE PACKAGE.**
- July 29, 2022 Completed tagging sheets, photos and unused tags due to Fair office by 4:00pm.

Tagging deadline IS the ownership deadline. If your animal is not owned and tagged by the listed date, it is not eligible for the 2022 Fair.

- **Tuesday September 27, 2022 Livestock weigh in at the 2022 San Benito County Fair!**
- **Wednesday September 28 through Friday September 30 Livestock shows**
- **Saturday October 1, 2022 Junior Livestock Auction**

**ENTRY QUESTIONS** - Please Contact department chairs individually with species specific questions or the office

Entry office questions to:

[entry@sanbenitocountyfair.com](mailto:entry@sanbenitocountyfair.com)

**Our Farmers and Businesses are strained in this current economy. Be sure to support them whenever you can. Buy your feeds and supplies locally and support CA Agriculture!**

# Livestock Department Updates



**ENTRY DEADLINE  
THURSDAY  
SEPTEMBER 8, 2022  
6:00pm in the Office  
11:55pm Online**

**Late entries will NEVER be accepted**

**STILLS ENTRY REQUIRED** – We LOVE to see your talents outside of the livestock department also! All Market livestock exhibitors must also enter a still exhibit at the 2022 Fair. Please review the categories and work on your fun unique project ahead of time and don't forget to enter in the correct category!

### **Reminder- Updated Weight Rules (January 2022)**

If an animal does not meet this weight range, it will be determined not market ready and will not sell.

Underweight animals may stay for exhibitors to participate in a feeder class and if entered, showmanship.

Animals over the maximum weight will be reloaded and must go home on weigh in day.

Market Steers/Heifers - 1050# to 1450#

Market Hogs – 215# to 275#

(this rule is already in place for hogs)

Market Goats – 65# to 110#

Market Lambs – 110# to 155#

The Board of Directors also heard the recommendations from the Livestock committee and voted on the following definition of a large small animal for eligibility of a San Benito County Fair market entry to show and sell.

- Large animal is defined as a Market Steer Heifer, Market Hog, Market Lamb or Market Goat
- Small animal is defined as Pen of Market Rabbits, Pen of Market Chickens or Market Turkey

With this vote they also updated the local rules to:

- Allow exhibitors from Santa Cruz and Monterey Counties to show and sell one (1) market animal regardless of size. Small animals only sell top 5 places, sale of small animal is not guaranteed.
- Allow exhibitors from San Benito County to show and sell 1 large market animal and one small animal. Small animals only sell top 5 places of each species, sale of small animal is not guaranteed.
- Current rules state top 5 of each small animals sell. This does not guarantee an opportunity to sell for small animal exhibitors unless they place in the top 5 of their species.

**YOCA CERTIFICATE** – Required for all 2022 Fairs. Make sure you have a current Certificate at Entry Deadlines.

May 17, 2022

# Monterey Fair

## Changes for 2022 Monterey County Fair Exhibits Department

- Division numbers have changed throughout the entire book
- Put entry fee at the beginning of the departments and not with every division
- Moving Home Arts, 4H & FFA, Visual Arts into Monterey Room (was in Seaside Room)
- Division 222: Fairy Globe Terrariums
- Deleted open judging, family connections, professional bakers divisions in Home Arts (no entries for three years)
- Deleted DVD & Video entries in Visual Arts (no entries for three years)
- Cut down amounts of cakes, pies, muffins to be turned in for judging & display (reduce waste)
- All new classes and divisions for quilters as requested by Quilters Guild
- No more Ag Equipment Repaired in 4-H & FFA (no entries for three years)
- Baked Goods in 4-H & FFA no longer accepted because of them sitting in the building so long
- Fresh floral arrangements no longer accepted in 4-H & FFA because they were dead by the time the fair opened. Dried floral is accepted.
- 4-H photography – changed size requirement to 8x10 (uniform size)
- Only horticulture allowed in 4-H & FFA is cacti, Dish Gardens & Succulents
- Parent Code of Conduct only needed for livestock
- Vegetable Judging & Livestock Judging Contests to be held during livestock week
- Removed premiums from feeder animals
- All animals must be on grounds by the time the scales open
- Poultry is still a one day show during livestock week. Grand & Reserve will come back the next day to go through the auction
- Rabbit showmanship and meat pens will be judged on 8.26.22 and managed by Fair. Open Junior breed show (CRCS) will be held on 8.27.22.
- Club/Chapter Group will not be pre-entered. They will sign up ringside before the shows
- Junior Fair Board will be putting on the Adult & Pee Wee Showmanship as well as the Livestock Judging Contest
- Goat weights will remain the same 60-125. New processor out of Fresno for resale
- Livestock Barn Hosting in exchange for having livestock show week prior to fair – voted on at November Board Meeting – link to sign up:  
<https://www.signupgenius.com/go/20F054BA9A62AA3FDO-2022>

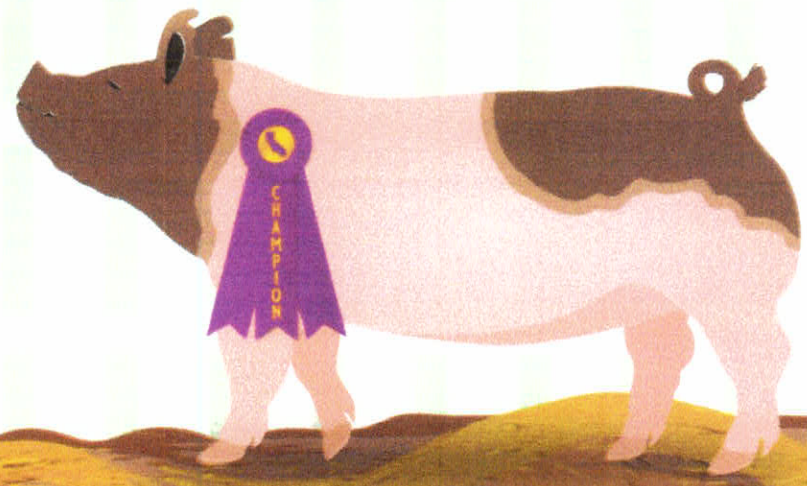


# ANIMAL CARE PROGRAM

HSC 25990-25994 (ALSO KNOWN AS PROPOSITION 12 INITIATIVE)

## FREQUENTLY ASKED QUESTIONS

# FAQ'S FOR CALIFORNIA FAIR & EXHIBITIONS STAKEHOLDERS 2022





# ANIMAL CARE PROGRAM

HSC 25990-25994 (ALSO KNOWN AS PROPOSITION 12 INITIATIVE)

## FREQUENTLY ASKED QUESTIONS

### FAQ's: Prop 12 FAQs for California Fair and Exhibitions Stakeholders

#### What is Prop 12?

- ♥ Ballot initiative passed in 2018 which set minimum confinement standards for California farms<sup>1</sup> raising egg-laying hens, breeding pigs and veal calves.
- ♥ The law also made it illegal to sell products from these farm animals in California that were not raised according to the minimum space requirements, regardless of if the animal was raised in California or out-of-state ([Prop 12 Health and Safety Code](#)).

#### Which farm animals are included under Prop 12?

- ♥ Egg-laying hen means any female domesticated chicken, turkey, duck, goose, or guineafowl kept for the purpose of egg production.
- ♥ Breeding pig means any female pig of the porcine species kept for the purpose of commercial breeding who is six months or older or pregnant.
- ♥ Veal calf means any calf of the bovine species kept for the purpose of producing the food product described as veal.

#### Which products from these animals are included under Prop 12?

- ♥ Shell eggs or liquid eggs means a whole egg of an egg-laying hen in its shell form or means eggs of an egg-laying hen broken from the shells.
- ♥ Whole pork meat means any uncooked cut of pork, including bacon, ham, chop, ribs, riblet, loin, shank, leg, roast, brisket, steak, sirloin, or cutlet, that is comprised entirely of pork meat of a breeding pig, or immediate offspring of a breeding pig.
- ♥ Whole veal meat means any uncooked cut of veal, including chop, ribs, riblet, loin, shank, leg, roast, brisket, steak, sirloin, or cutlet, that is comprised entirely of veal meat of a calf raised for veal.

#### What are the minimum confinement standards for these farm animals?

- ♥ All of these farm animals must be confined in a manner that allows the animal to lie down, stand up, fully extend limbs, and turn around freely. Additionally,
- ♥ Egg-laying hen: Must have access to enrichments like purchases, nests and scratch areas and the minimum amount of usable floorspace per hen required by the 2017 edition of the United Egg Producers' Guidelines for Cage-Free Housing system ([UEP 2017 Guidance](#))
- ♥ Breeding pig: minimum of 24 square feet of usable floorspace per breeding pig with an allowance for the use of farrowing crates (HSC Section 25992 (f)).
- ♥ Veal calf: minimum of 43 square feet of usable floorspace per calf.

<sup>1</sup> "Farm" means the land, building, support facilities, and other equipment that are wholly or partially used for the commercial production of animals or animal products used for food or fiber.





# ANIMAL CARE PROGRAM

HSC 25990-25994 (ALSO KNOWN AS PROPOSITION 12 INITIATIVE)

## FREQUENTLY ASKED QUESTIONS

### FAQ's: Prop 12 FAQs for California Fair and Exhibitions Stakeholders

#### What are the exceptions to Prop 12 related to California fairs and exhibitions?

- ♥ Prop 12 minimum confinement standards are not required during state or county fair exhibitions.
- ♥ 4-H and other youth programs for exhibition are exempt from the minimum confinement standards.

#### If I am buying a youth program market pig from a breeder for the 2022 fair season, do I need certification that the breeding pig (dam of the market pig) is housed in compliance with Prop 12?

- ♥ To maximize the eventual market potential for a youth program market pig, a best practice is to request written certification from the seller stating that the breeding pig (the dam) was kept in Prop 12 compliant housing.
- ♥ All farms located in California that are raising animals included in Prop 12 for commercial sale must be compliant with minimum confinement standards. *This is the responsibility of the farm owner or operator* and applies to breeder operations in California regardless of who buys the pigs.
- ♥ If products from fair animals might be sold in California commerce, buyers of the pig or buyers of downstream products (processors, retailers) may require written certification that the market pig came from a breeding pig that was confined in compliance with Prop 12 minimum standards, even if the breeder is out of state.

#### What should I do as a fair CEO or Junior Livestock Auction Committee that manages livestock auction?

- ♥ Reach out to your processor to find out what documentation related to Prop 12 they need for market pigs and veal calves processed for resale.
- ♥ Work with participants and processors to: streamline the collection of written certification; establish certification for all entrants and process as a lot; explore processing options not subject to Prop 12 like custom harvest or sponsored donation of products to non-profit organizations; etc.

To learn more and to sign up for Prop 12 updates, scan or click the below QR code, or visit <https://www.cdffa.ca.gov/ahfss/Prop12.html>

You can follow us on social media by scanning the below QR codes or by clicking on each individual QR code with your cursor. Email questions to: [AnimalCare@cdffa.ca.gov](mailto:AnimalCare@cdffa.ca.gov)





# ANIMAL CARE PROGRAM

HSC 25990-25994 (ALSO KNOWN AS PROPOSITION 12 INITIATIVE)



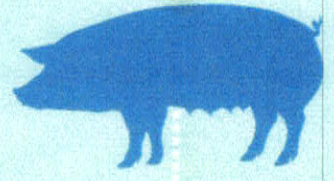
Commercial sale of all **Proposition 12** defined covered products must not be from covered animals **confined in a cruel manner\*** even when covered products originate from covered animals raised outside of California



\*Cruel manner is defined as housing animals in ways smaller than necessary to be a natural, functional life animal from birth through, at a minimum, including the animal's term, or killing without cause.

**JANUARY 1, 2020**

**JANUARY 1, 2022**



Egg-laying hens require a minimum of 144 square inches of floor space per hen.

Calves raised for veal require a minimum of 43 square feet of floor space per calf.

Egg-laying hens included require cage-free housing outlined in United Egg Producers 2017 Guidelines.

Breeding pigs require a minimum of 24 square feet of floor space per pig.

FOOD PRODUCTS INCLUDE

FOOD PRODUCTS INCLUDE

FOOD PRODUCTS INCLUDE

FOOD PRODUCTS INCLUDE



**SHELL EGGS  
LIQUID EGGS**

**WHOLE UNCOOKED VEAL  
UNCOOKED VEAL CUTS**

**SHELL EGGS  
LIQUID EGGS**

**WHOLE UNCOOKED PORK  
UNCOOKED PORK CUTS**

